

Sanford South University Hospital Fargo – Acute Rehabilitation

Serving the region since 1984.

CARF Accredited – Aspiring to Excellence in Rehabilitation since 1991.

Patient Outcomes FY 2020 – General Rehab – “Believe You Can Achieve”



As a person interested in the rehabilitation unit, you have the right to know about us. We recognize you have a choice in health care services and we want to thank you for considering/choosing Sanford Health.

We served 419 patients in FY 2020 with an average length of stay of 13.9 days with 5 under the age of 18.

For Your Information

Impairment	# of Patients in FY 2020	Average Length of Stay	Region Length of Stay
Stroke	192	14.7	15.1
Brain (traumatic/nontraumatic)	86	14.0	13.2
Ortho	19	7.8	10.4
Neurologic Conditions	15	12.8	12.1
Spinal Cord	29	18.9	21.8
Amputation	3	7.3	10.1
Multitrauma	35	11.3	11.4
Debility/Post COVID	40	12.2	10.9

Patient Statistics	Sanford	Region
Average Age	60.1	64.7
Medicare as primary insurance	37.2%	44.2%
Discharged to community	78.8%	81.3%
Discharged back to hospital	10.7%	8.1%
Discharged to long term care	10.3%	10.1%

Patients participate in at least 3 hours of therapy per day, 5 of 7 days a week, while having their program and medical needs managed by Rehabilitation MD Specialists, Hospitalists, Rehab Nurses, Therapists, and other specialists as needed.

Patient Satisfaction Surveys

Likelihood of recommending hospital to others:
<ul style="list-style-type: none"> 99%
Overall satisfied with program and outcomes
<ul style="list-style-type: none"> 94.1%
Rehab program helped you meet goals:
<ul style="list-style-type: none"> 91.5%

Quality Outcomes

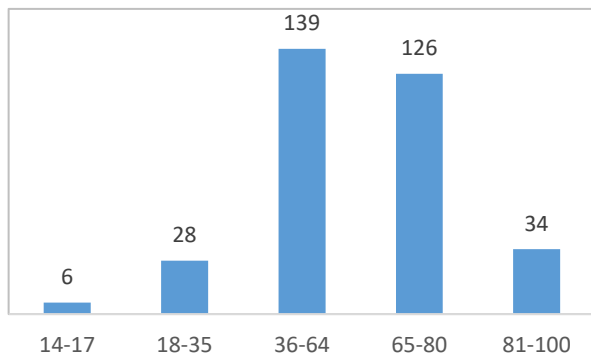
No Catheter Associated Urinary Tract Infections
No Central Line Infections
No hospital acquired C.diff
Change in patients ability to care for themselves: 12.1 compared to nation 12.3*
Change in patients' ability to move around: 30.2 compared to nation 30.3*
*These measures reflect our rehab's average change in self-care and mobility scores between admission and discharge.

Patients on this unit are 14 years and older. Younger patients are evaluated on an individual basis for appropriate admission.

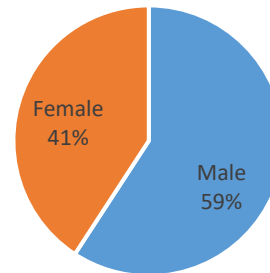
For more information about the Sanford Health inpatient rehabilitation unit, please visit us online at [sanfordhealth.org](https://www.sanfordhealth.org) keyword: rehabilitation. To compare other inpatient rehabs, please visit <https://www.medicare.gov/care-compare/>

Data from UDSMR and Press Ganey/NRC FY 2020

FY 2020 Age Distribution



FY 2020 Gender Distribution



What our Rehab has to offer Patients / Families / Acute Teams:

Interdisciplinary Team Approach with care managed by Board Certified Physical Medicine and Rehabilitation Physicians

- Nursing has over 454 years of rehab experience
 - 47.8% of nurses on rehab are certified.
- Occupational Therapy has over 125 years of rehab experience
 - Trained to assess and manage visual disturbances
 - Driving program to address concerns post rehab stay on site!
- Physical Therapy has over 107 years of rehab experience
- Speech Language Pathology has over 107 years of rehab experience
 - Trained in dysphagia treatments and video fluoroscopic swallow studies
- Recreational Therapy – 2 full time staff & Psychology/Psychiatry/Behavioral Health Therapy on Site
 - Offers community outings for re-entry into the community
 - Leads and organizes our Brain Injury support group
- Multiple therapists are Certified Brain Injury Therapists available in both Inpatient and Outpatient Programming
- 24/7 internal medicine availability in house for medical management / emergency needs with the ability to provide services such as lab, x-ray, dialysis, respiratory care, etc. ON SITE
- Sanford Medical Center in Fargo is:
 - CARF accredited in General Rehabilitation and Brain Injury (the only one in ND)
 - Comprehensive Stroke Certified (the only one in ND)
 - Certified Level 1 Trauma Center (the only one in ND)
 - Non-Profit Organization

For more information about the Sanford Health inpatient rehabilitation unit, please visit us online at [sanfordhealth.org](https://www.sanfordhealth.org) keyword: rehabilitation. To compare other inpatient rehabs, please visit <https://www.medicare.gov/care-compare/>

Data from UDSMR and Press Ganey/NRC FY 2020