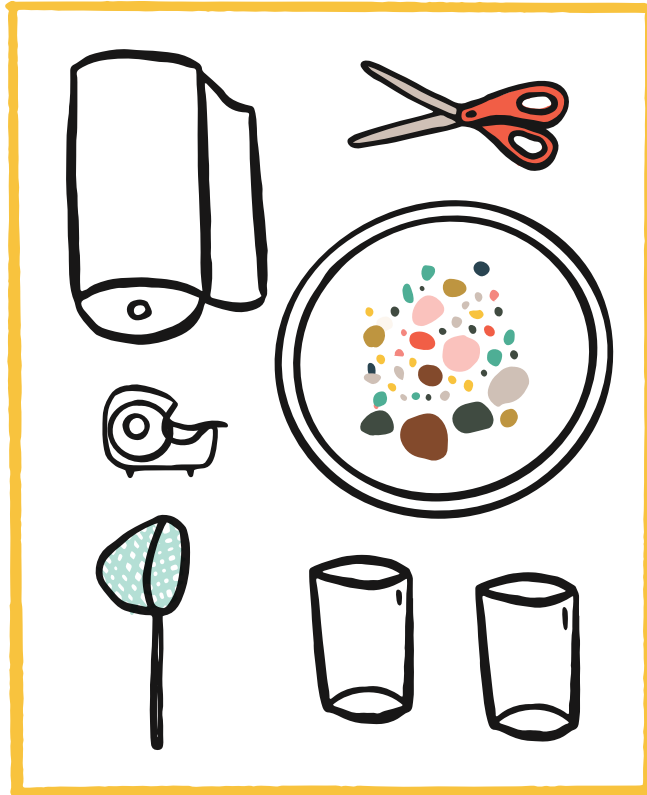


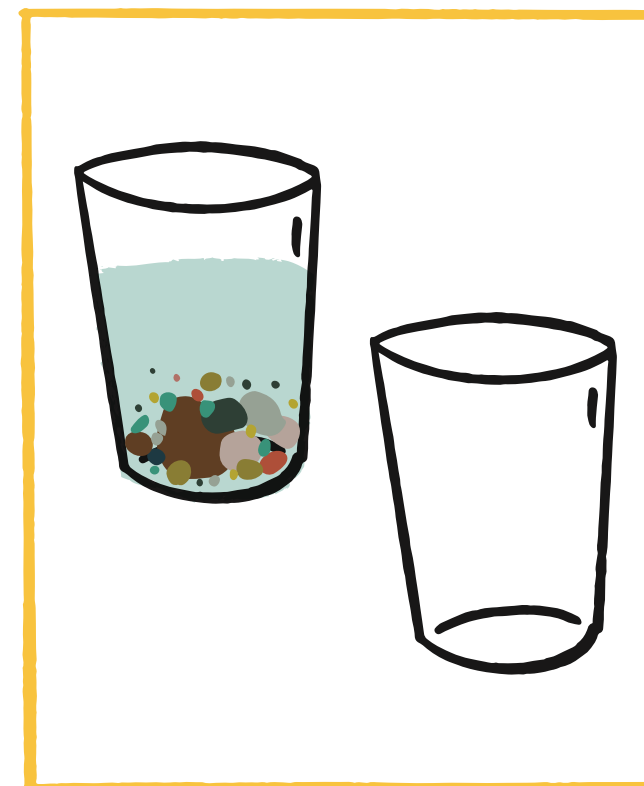
KIDNEY FILTERING EXPERIMENT



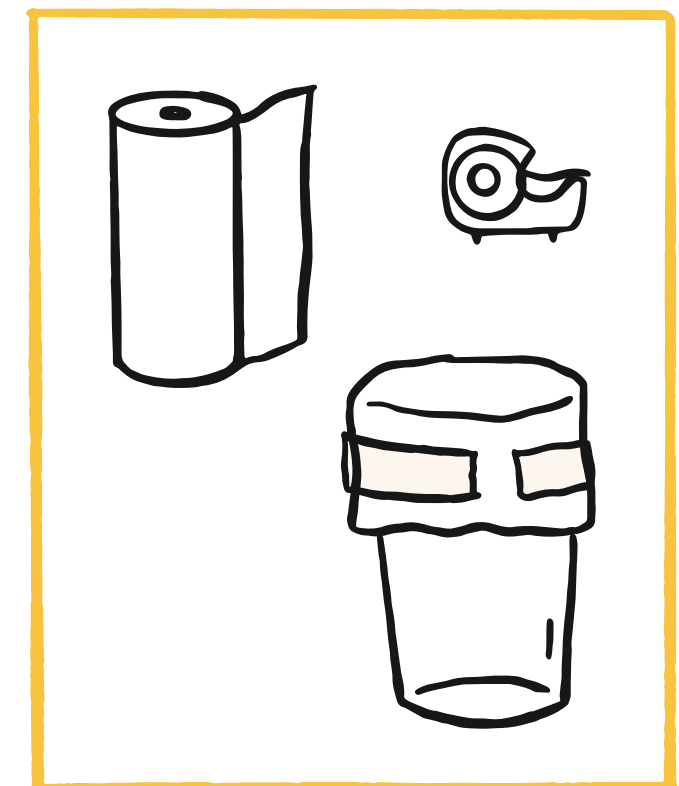
1. Gather supplies



2. Add soil, beads, salt and glitter.



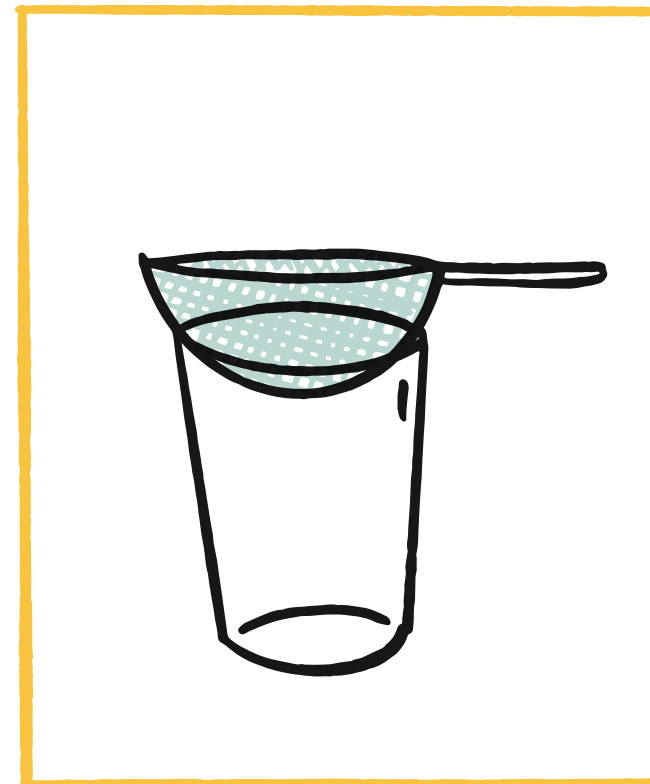
3. Add water, filling cup halfway.



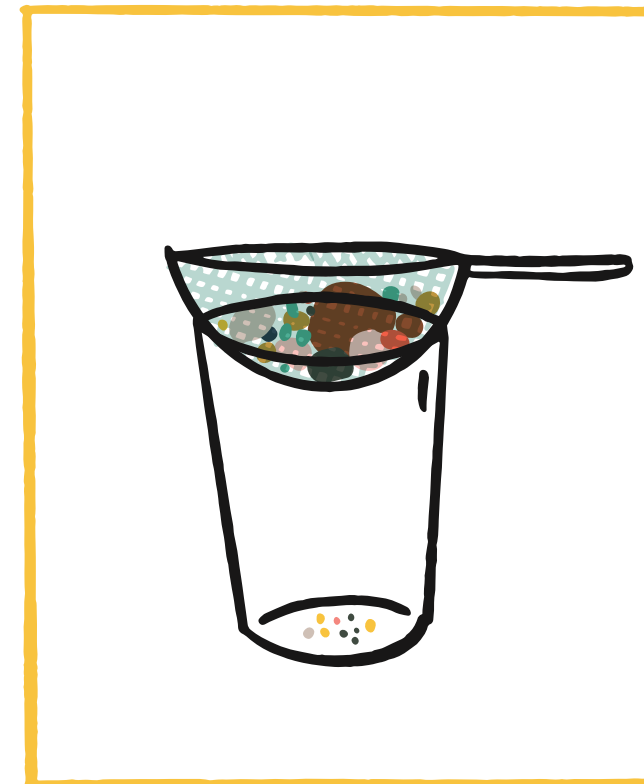
4. Create a filter.



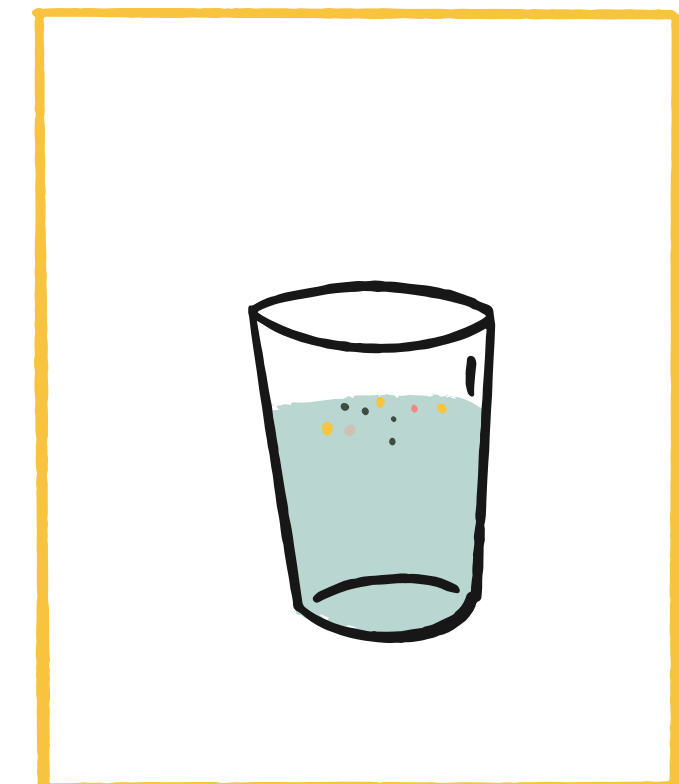
5. Test out your filter.



6. Experiment with other filters.

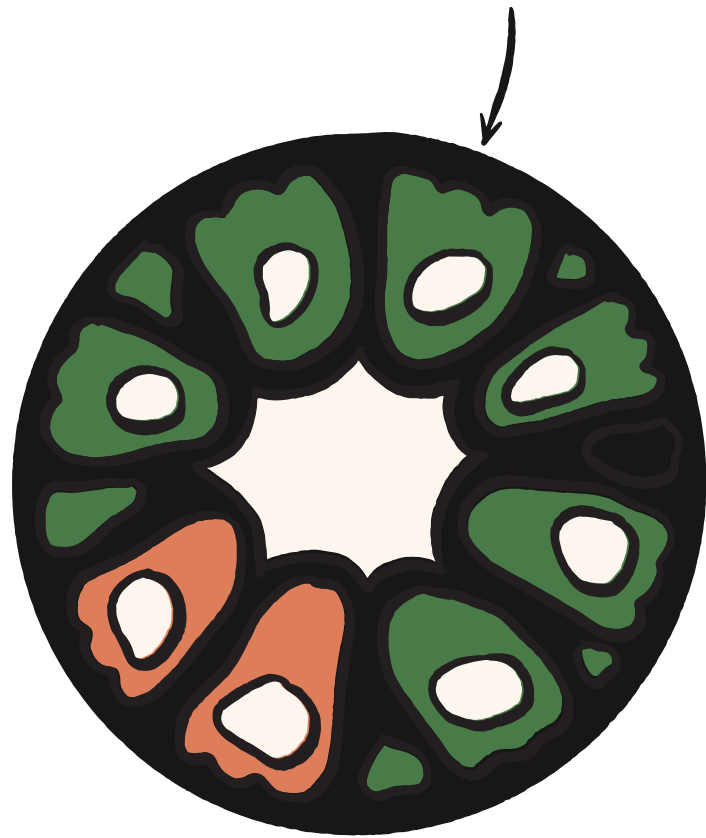


7. Keep testing.

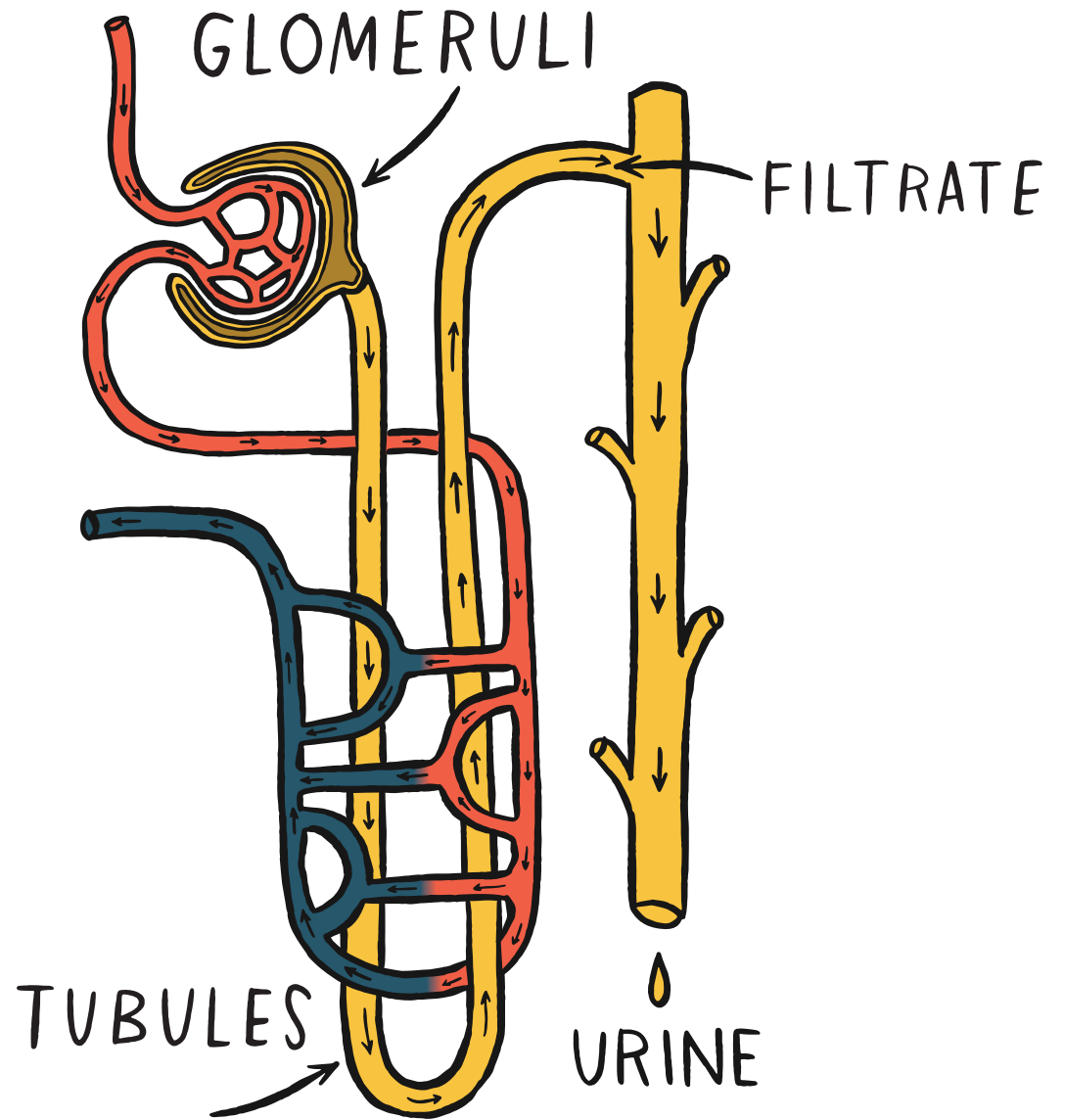


8. Filter out as much as possible.

PRINCIPAL CELLS



INTERCALATED CELLS



Principal cell - A cell of the collecting duct responsible for absorbing water.

Intercalated cell - A cell of the collecting duct responsible for absorbing acids and bases.

Glomeruli - A cluster of capillaries around the end of a kidney tubule where waste products are filtered.

Filtrate - Fluid that is filtered from the blood. Much of the filtrate is reabsorbed into the body.

Tubules - Part of the nephron leading away from the glomerulus. These tubules twist and turn until eventually empty into the collecting duct.